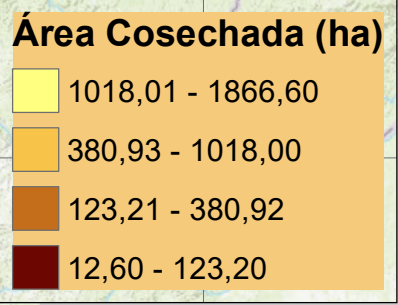
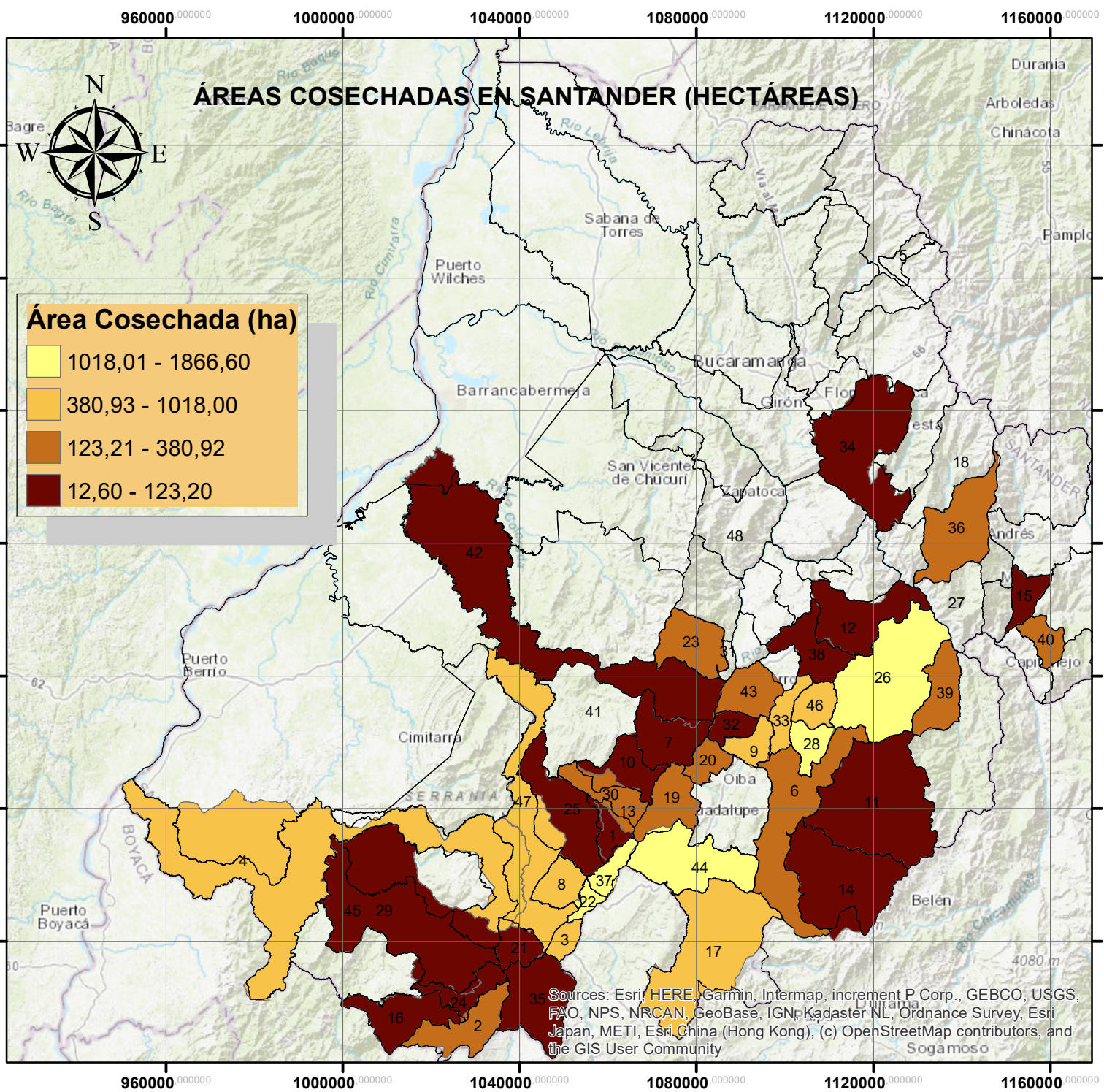


ÁREAS COSECHADAS EN SANTANDER (HECTÁREAS)



Sources: Esri, HERE, Garmin, Intermap, increment P Corp., GEBCO, USGS, FAO, NPS, NRCAN, Geobase, IGN, Kadaster NL, Ordnance Survey, Esri Japan, METI, Esri China (Hong Kong), (c) OpenStreetMap contributors, and the GIS User Community

No, MUNICIPIO	12, CURITI	24, JESUS MARIA	36, SAN ANDRES
1, AGUADA	13, EL GUACAMAYO	25, LA PAZ	37, SAN BENITO
2, ALBANIA	14, ENCINO	26, MOGOTES	38, SAN GIL
3, BARBOSA	15, ENCISO	27, MOLAGAVITA	39, SAN JOAQUIN
4, BOLIVAR	16, FLORIAN	28, OCAMONTE	40, SAN MIGUEL
5, CALIFORNIA	17, GAMBITA	29, OIBA	41, SANTA HELENA DEL OPON
6, CHARALA	18, GUACA	30, ONZAGA	42, SIMACOTA
7, CHIMA	19, GUADALUPE	31, PALMAR	43, SOCORRO
8, CHIPATA	20, GUAPOTA	32, PALMAS DEL SOCORRO	44, SUAITA
9, CONFINES	21, GUAVATA	33, PARAMO	45, SUCRE
10, CONTRATACION	22, GUEPSA	34, PIEDECUESTA	46, VALLE DE SAN JOSE
11, COROMORO	23, HATO	35, PUENTE NACIONAL	47, VELEZ
			48, ZAPATOCA