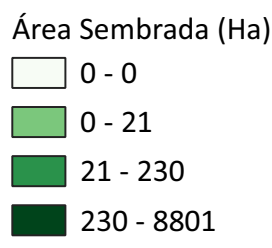
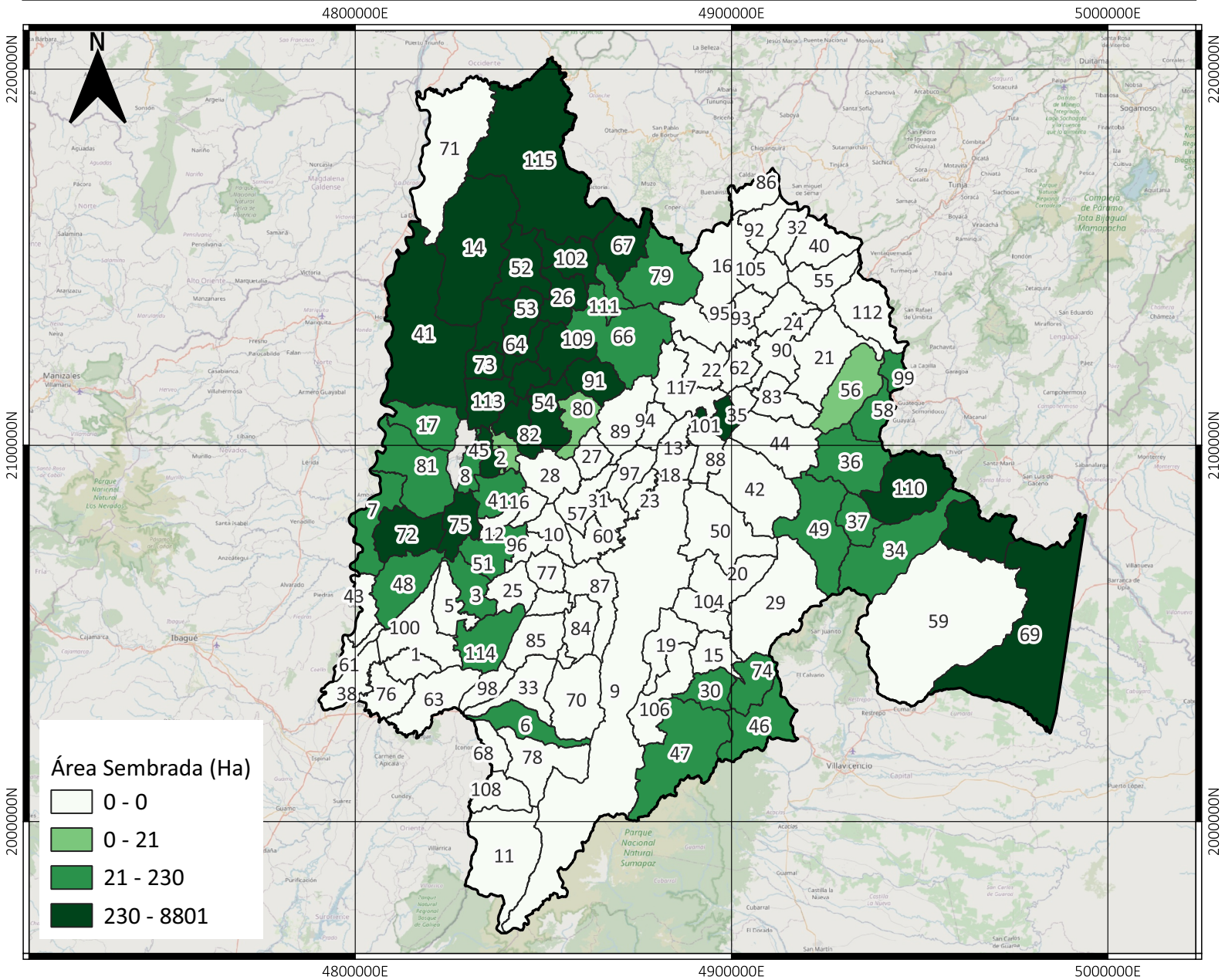


# ÁREA SEMBRADA EN CAÑA PANELERA CUNDINAMARCA - COLOMBIA (HECTÁREAS) 2022



| No | Municipio        | No | Municipio  | No | Municipio           | No  | Municipio                  |
|----|------------------|----|------------|----|---------------------|-----|----------------------------|
| 1  | Agua De Dios     | 19 | Chipaque   | 38 | Girardot            | 57  | Madrid                     |
| 2  | Albán            | 20 | Choachí    | 39 | Granada             | 58  | Manta                      |
| 3  | Anapoima         | 21 | Chocontá   | 40 | Guachetá            | 59  | Medina                     |
| 4  | Anolaima         | 22 | Cogua      | 41 | Guaduas             | 60  | Mosquera                   |
| 5  | Apulo            | 23 | Cota       | 42 | Guasca              | 61  | Nariño                     |
| 6  | Arbeláez         | 24 | Cucunubá   | 43 | Guataquí            | 62  | Nemocón                    |
| 7  | Beltrán          | 25 | El Colegio | 44 | Guatavita           | 63  | Nilo                       |
| 8  | Bituima          | 26 | El Peñón   | 45 | Guayabal De Síquima | 64  | Nimaima                    |
| 9  | Bogotá, D.C.     | 27 | El Rosal   | 46 | Guayabetal          | 65  | Nocaima                    |
| 10 | Bojacá           | 28 | Facatativá | 47 | Gutiérrez           | 66  | Pacho                      |
| 11 | Cabrera          | 29 | Fómeque    | 48 | Jerusalén           | 67  | Paime                      |
| 12 | Cachipay         | 30 | Fosca      | 49 | Junín               | 68  | Pandi                      |
| 13 | Cajicá           | 31 | Funza      | 50 | La Calera           | 69  | Paratebueno                |
| 14 | Caparrapí        | 32 | Fúquene    | 51 | La Mesa             | 70  | Pasca                      |
| 15 | Cáqueza          | 33 | Fusagasugá | 52 | La Palma            | 71  | Puerto Salgar              |
| 16 | Carmen De Carupa | 34 | Gachalá    | 53 | La Peña             | 72  | Pulí                       |
| 17 | Chaguaní         | 35 | Gachancipá | 54 | La Vega             | 73  | Quebradanegra              |
| 18 | Chía             | 36 | Gachetá    | 55 | Lenguazaque         | 74  | Quetame                    |
|    |                  | 37 | Gama       | 56 | Machetá             | 75  | Quipile                    |
|    |                  |    |            |    |                     | 76  | Ricaurte                   |
|    |                  |    |            |    |                     | 77  | San Antonio Del Tequendama |
|    |                  |    |            |    |                     | 78  | San Bernardo               |
|    |                  |    |            |    |                     | 79  | San Cayetano               |
|    |                  |    |            |    |                     | 80  | San Francisco              |
|    |                  |    |            |    |                     | 81  | San Juan De Rioseco        |
|    |                  |    |            |    |                     | 82  | Sasaima                    |
|    |                  |    |            |    |                     | 83  | Sesquilé                   |
|    |                  |    |            |    |                     | 84  | Sibaté                     |
|    |                  |    |            |    |                     | 85  | Silvania                   |
|    |                  |    |            |    |                     | 86  | Simijaca                   |
|    |                  |    |            |    |                     | 87  | Soacha                     |
|    |                  |    |            |    |                     | 88  | Sopó                       |
|    |                  |    |            |    |                     | 89  | Subachoque                 |
|    |                  |    |            |    |                     | 90  | Suesca                     |
|    |                  |    |            |    |                     | 91  | Supatá                     |
|    |                  |    |            |    |                     | 92  | Susa                       |
|    |                  |    |            |    |                     | 93  | Sutatausa                  |
|    |                  |    |            |    |                     | 94  | Tabio                      |
|    |                  |    |            |    |                     | 95  | Tausa                      |
|    |                  |    |            |    |                     | 96  | Tena                       |
|    |                  |    |            |    |                     | 97  | Tenjo                      |
|    |                  |    |            |    |                     | 98  | Tibacuy                    |
|    |                  |    |            |    |                     | 99  | Tibirita                   |
|    |                  |    |            |    |                     | 100 | Tocaima                    |
|    |                  |    |            |    |                     | 101 | Tocancipá                  |
|    |                  |    |            |    |                     | 102 | Topaipí                    |
|    |                  |    |            |    |                     | 103 | Ubalá                      |
|    |                  |    |            |    |                     | 104 | Ubaque                     |
|    |                  |    |            |    |                     | 105 | Ubaté                      |
|    |                  |    |            |    |                     | 106 | Une                        |
|    |                  |    |            |    |                     | 107 | Útica                      |
|    |                  |    |            |    |                     | 108 | Venecia                    |
|    |                  |    |            |    |                     | 109 | Vergara                    |
|    |                  |    |            |    |                     | 110 | Ubalá                      |

**INFORMACIÓN DE REFERENCIA:**  
 Sistema coordinado: MAGNA SIRAS CTM12  
 ESRI: 103599  
 Datum: MAGNA

