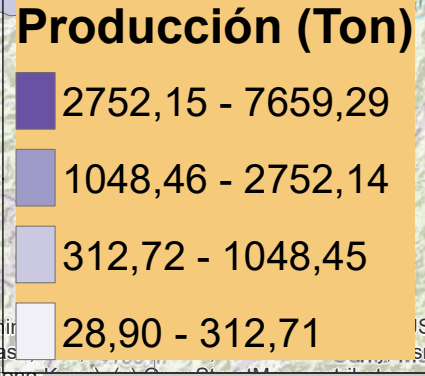
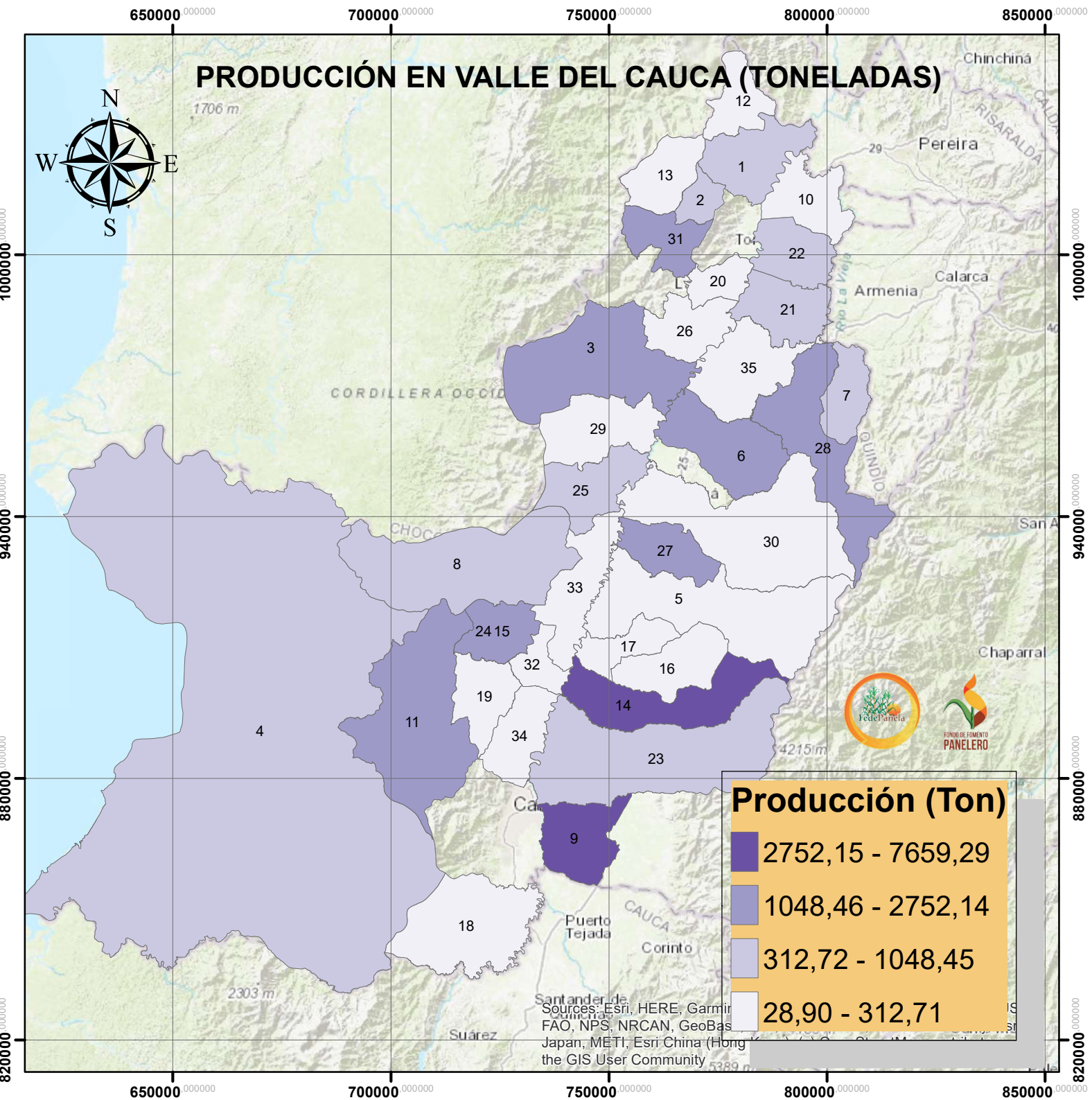


PRODUCCIÓN EN VALLE DEL CAUCA (TONELADAS)



No, MUNICIPIO	8, CALIMA	15, EL DOVIO	22, OBANDO	29, TRUJILLO
1, ANSERMANUEVO	9, CANDELARIA	16, GINEBRA	23, PALMIRA	30, TULUA
2, ARGELIA	10, CARTAGO	17, GUACARI	24, RESTREPO	31, VERSALLES
3, BOLIVAR	11, DAGUA	18, JAMUNDI	25, RIOFRIO	32, VIJES
4, BUENAVENTURA	12, EL AGUILA	19, LA CUMBRE	26, ROLDANILLO	33, YOTOCO
5, BUGA	13, EL CAIRO	20, LA UNION	27, SAN PEDRO	34, YUMBO
6, BUGALAGRANDE	14, EL CERRITO	21, LA VICTORIA	28, SEVILLA	35, ZARZAL
7, CAICEDONIA				

Sources: Esri, HERE, Garmin, FAO, NPS, NRCAN, GeoBas, Japan, METI, Esri China (Hong Kong), Swisstopo, the GIS User Community