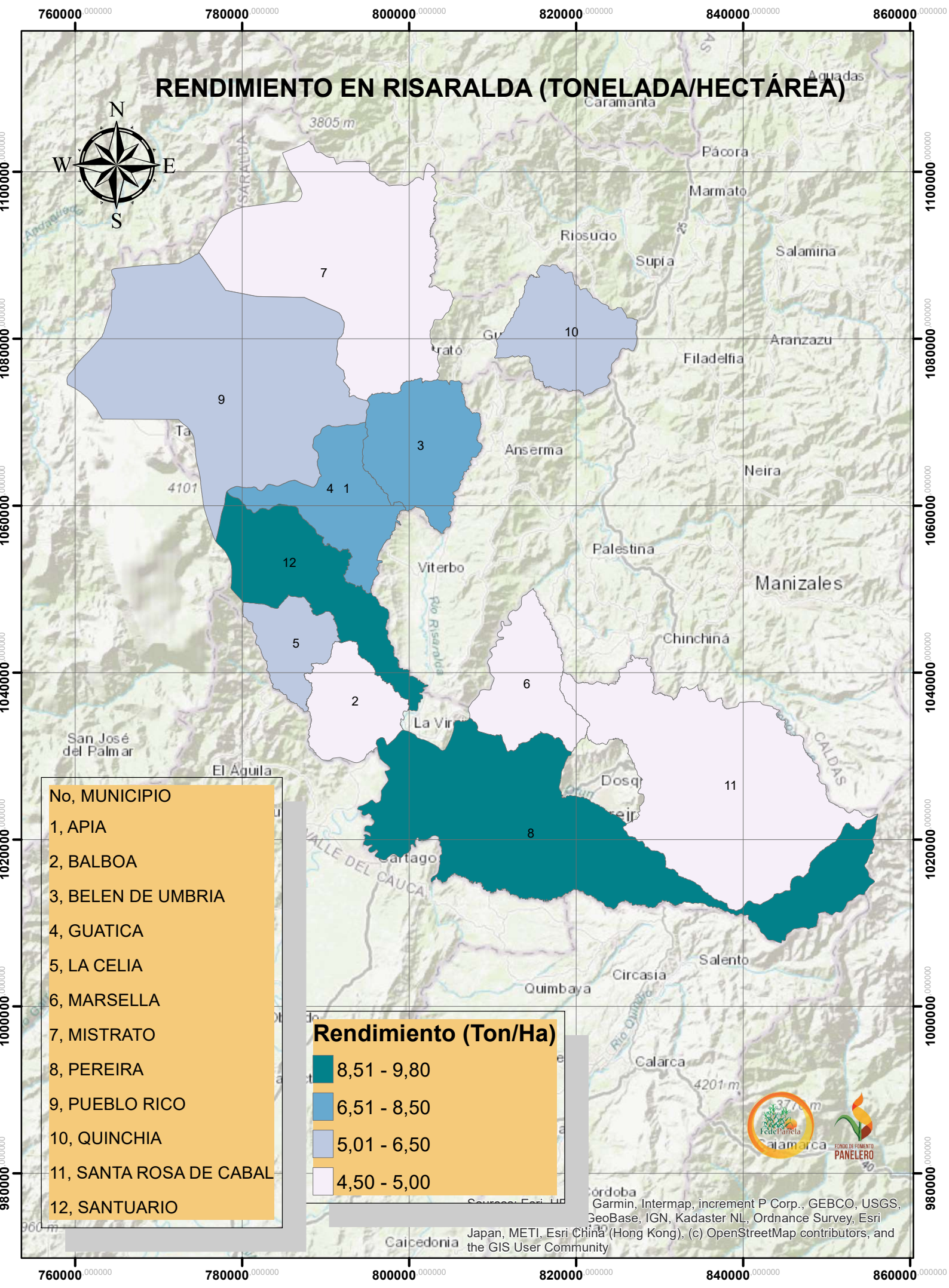


# RENDIMIENTO EN RISARALDA (TONELADA/HECTÁREA)



No, MUNICIPIO
1, APIA
2, BALBOA
3, BELEN DE UMBRIA
4, GUATICA
5, LA CELIA
6, MARSELLA
7, MISTRATO
8, PEREIRA
9, PUEBLO RICO
10, QUINCHIA
11, SANTA ROSA DE CABAL
12, SANTUARIO

Rendimiento (Ton/Ha)	
	8,51 - 9,80
	6,51 - 8,50
	5,01 - 6,50
	4,50 - 5,00



Garmin, Intermap, increment P Corp., GEBCO, USGS, GeoBase, IGN, Kadaster NL, Ordnance Survey, Esri Japan, METI, Esri China (Hong Kong), (c) OpenStreetMap contributors, and the GIS User Community