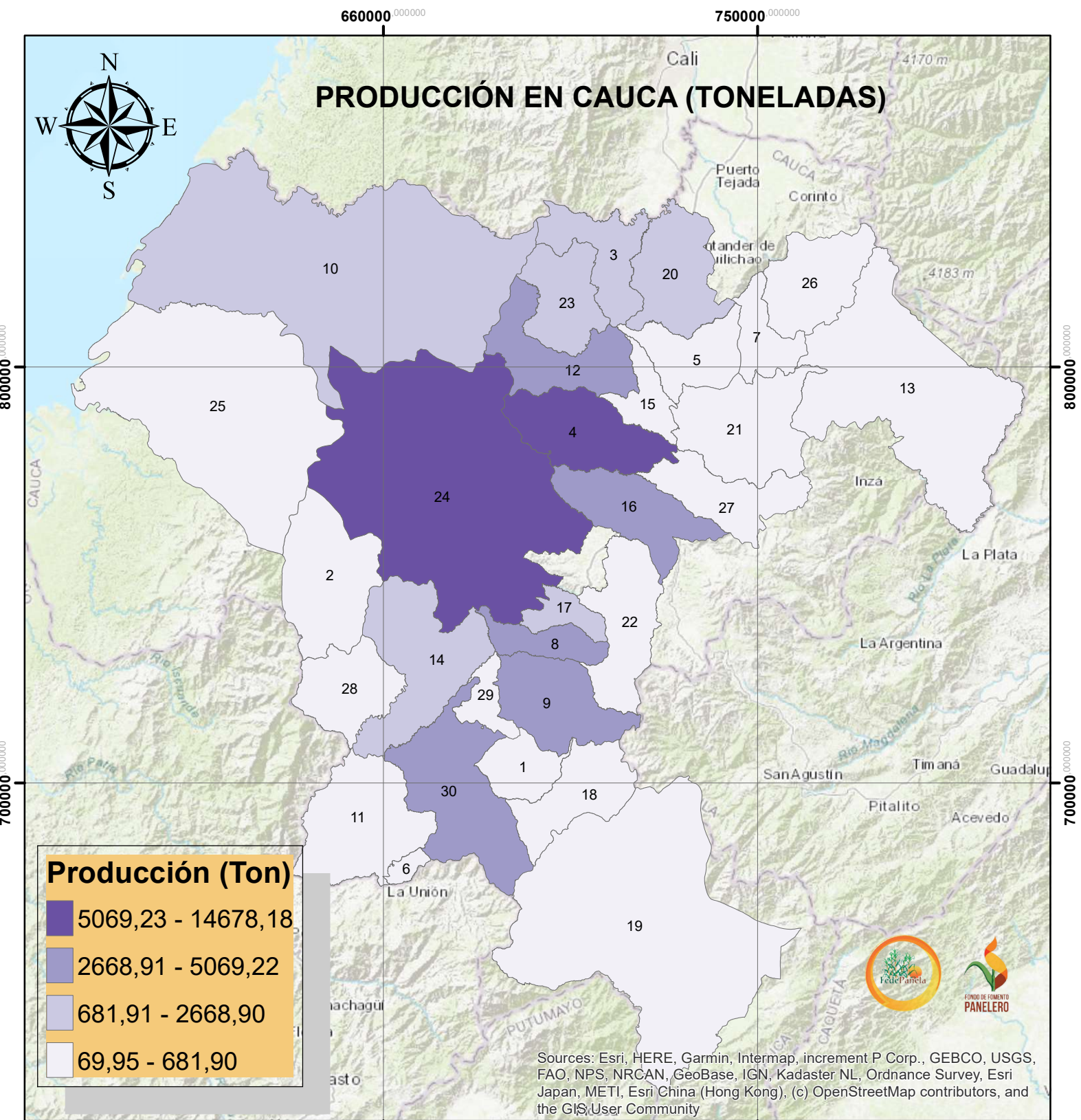
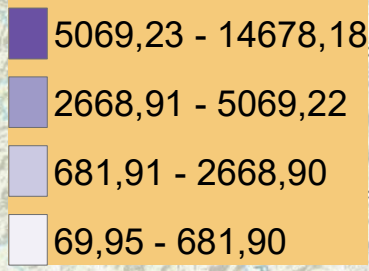


PRODUCCIÓN EN CAUCA (TONELADAS)



Producción (Ton)



Sources: Esri, HERE, Garmin, Intermap, increment P Corp., GEBCO, USGS, FAO, NPS, NRCAN, GeoBase, IGN, Kadaster NL, Ordnance Survey, Esri Japan, METI, Esri China (Hong Kong), (c) OpenStreetMap contributors, and the GIS User Community

No, MUNICIPIO	7, JAMBALO	13, PAEZ	19, SANTA ROSA	25, TIMBIQUI
1, ALMAGUER	8, LA SIERRA	14, PATIA	20, SANTANDER DE QUILICHAO	26, TORIBIO
2, ARGELIA	9, LA VEGA	15, PIENDAMO	21, SILVIA	27, TOTORO
3, BUENOS AIRES	10, LOPEZ DE MICAY	16, POPAYAN	22, SOTARA	28, BALBOA
4, CAJIBIO	11, MERCADERES	17, ROSAS	23, SUAREZ	29, SUCRE
5, CALDONO	12, MORALES	18, SAN SEBASTIAN	24, EL TAMBO	30, BOLIVAR
6, FLORENCIA				